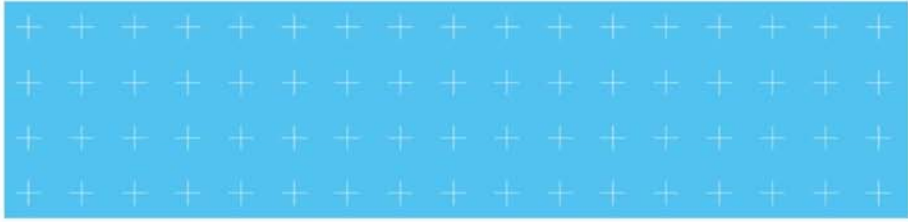


Pioway Medical Lab Equipment Co., Ltd.



# FDC8000

Color Doppler Ultrasound System  
[www.pioway.com](http://www.pioway.com)



VERSATILE

FRIENDLY

COMPACT



# FDC8000

Color Doppler Ultrasound System  
Versatile · Friendly · Compact



## Enhanced user interface and ergonomic panel

Intuitive user interface reduces keystrokes and manipulations when transforming modes among B/BB/M/CD/PWD /CWD/DirPwr/Pwr



## Articulating arm

Fully articulating arm enables monitor to move independently of console



8EC4A

## 15 inch high-resolution medical LCD

Medical LCD reduces eye fatigue and improves visibility and clarity



4V2S

## Transducer

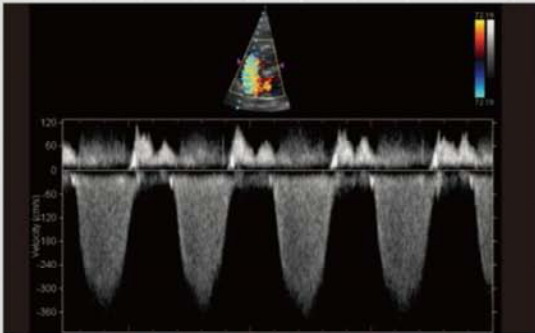
Versatile selectable probes, such as transvaginal probe, phase array probe, convex probe and high frequency linear probe



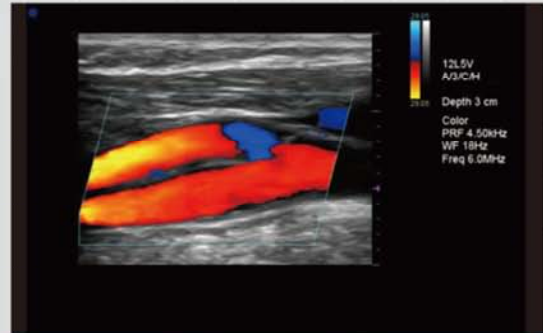
5C2A



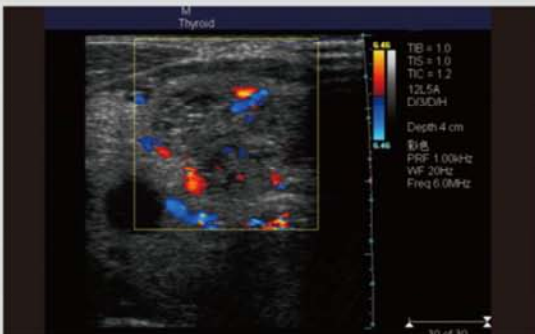
12L5A



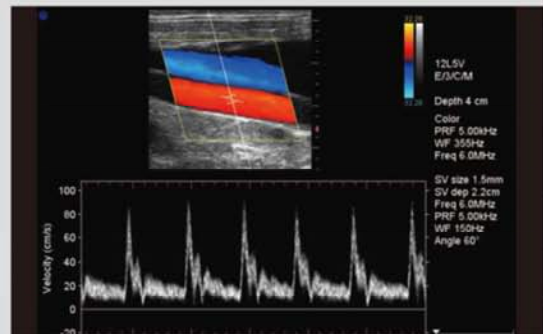
Frequency Spectral Doppler of Regurgitation



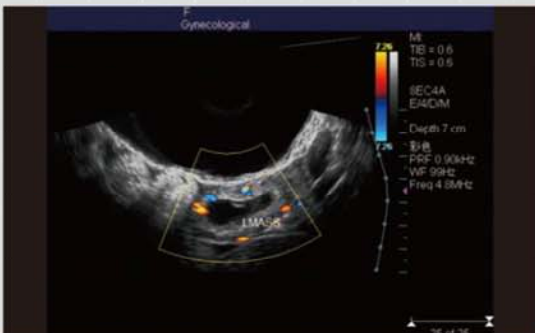
Carotid Bifurcation



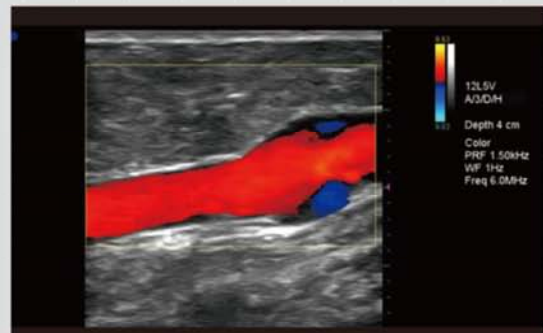
Thyroid Imaging In Color Mode



Real-time Triplex Display



Vaginal Imaging In Color Doppler Mode



Reflux Dilated Long Saphenous Vein




Cardiac Imaging In Doppler Color-mode



Twins Imaging In 2d-mode





#### Applications

abdominal, OB/GYN, urology, cardiology, vessel, musculoskeletal, small parts

#### Display Modes

B/BB/M/CD/PWD/CWD/DirPwr/Pwr

#### Continuous Wave Doppler (CWD)

Expand hemodynamic diagnosis to professional cardiac application, especially congenital heart diseases, offering more clinical accuracy and reliability

#### Triplex Display

Real-time triplex display B/Color Doppler/Pulsed Spectral Doppler (Three TGCs can be adjusted respectively)

#### Standard Transducer

Convex 5C2A(2.0-5.0 MHz), Linear 12L5A(5.0-12.0 MHz), Transvaginal 8EC4A(4.0-8.0 MHz)

#### Optional Transducers

Phased array 4V2S(2.0-4.0 MHz)

#### High-precision Full Digital Image Technology

digital beam-forming/real-time continuous dynamic focusing/digital dynamic aperture/real-time dynamic apodization/real-time independent frequency conversion/adjustable focus position

#### High Sensitivity Blood Image (HSI)

synchronous, homogeneous, clear, sufficient colorful blood image

#### High-definition Frequency Spectrum Image (HDI)

recognizable sharp marginal blood frequency spectrum echo image

#### Trapezoid Imaging(TI)

offer trapezoidal field of vision to enlarge the view angle of linear imaging

#### Sector Expanding Image

offer a wider view of the organs

#### Advanced Image Processing Technology

automatic image optimizing enhancement/smoothing filter/frame correlation/sharpen/pseudo-color/color priority/grey level transformation/real-time zoom

#### Tissue Harmonic Imaging(THI)

suppress speckle noise, brighten image and improve the image quality

#### Automatically-optimized Parameters

adjust the parameters automatically according to the specific clinical diagnostic position so as to save the operating time consumption

#### Powerful Measurement Software

versatile clinic-oriented measuring software package

#### i-Station

versatile image format, such as AVI, JPG, TIF, BMP, SEQ, DICOM3.0 and super high medical report capacity storage, fast report management, such as preview, edit, print and transmission

#### Port

USB2.0, RS-232, XGA, DICOM3.0, PAL-D, Network, DVD-R/W

#### Annotation

Text/Body Mark and etc.

#### Report

Automatic report generation

#### Monitor

15 inch medical LCD

#### Panel

ergonomic panel